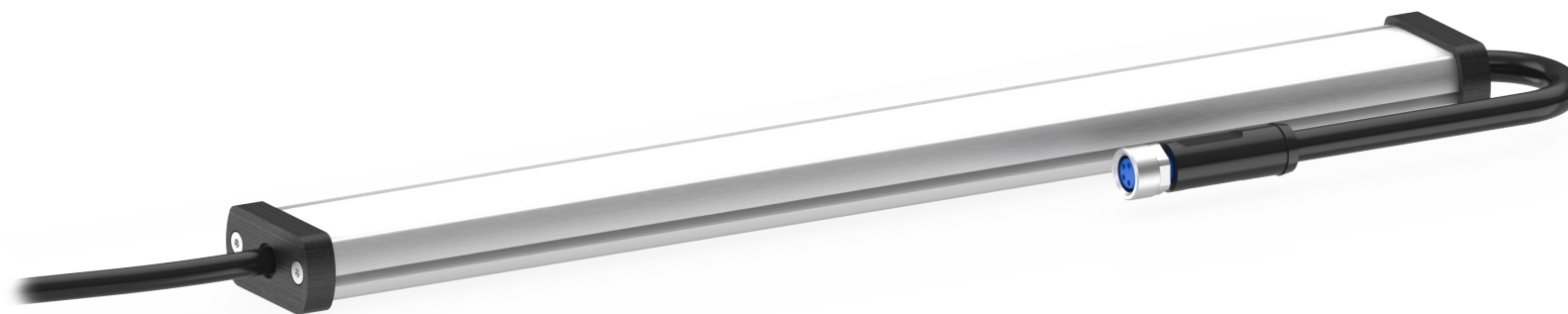


Functional · SCX Series 5000K

lumher



24 V
DC

155
lm/W



CASCADABLE



INCREMENTAL



FUNCTIONAL



CABLE

POWER 1x
ECO 0,5x

IP40

PWM



DIMABLE



CLASS III

36
MONTHS



MADE IN SPAIN

Technical specifications

Power supply voltage	24 Vdc ±5%	
Luminous efficiency	155 lm/W	
PWM regulation (Max 25 KHz)	min. 0%	max. 100%
Wavelength	Daylight white	5000K
Beam angle	Semidiffuse Ultradiffuse	150° 150°
Max. number of cascable modules ⁽¹⁾	Power = 56	Eco = 112
Electrical protections	Transient overvoltages Polarity reversal Current stabilizer	YES YES YES
Colour Rendering Index (CRI)	≥ 80	
IP Rating	IP40	
Protection type	Class III	
Operating temperature	POWER version ECO version	-10°C to +40°C -10°C to +50°C
Storage temperature	0°C a +60°C	
Max. relative humidity	80% (without condensation)	
Body material	Anodized aluminum	
Side cover material	Anodized aluminum	
Diffuser material	Polycarbonate	
Connection types	2m cable, M8 connector with cable	
Standards	RoHs, CE	

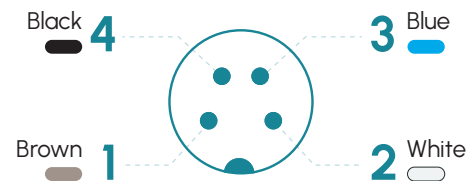
(1) The number representing the length of the luminaire is the number of modules it has.

Connection

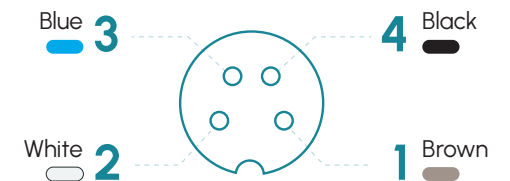
Input M8A - Cable	Power	Eco	Dual
Pin 1 - Brown	+24 Vdc	+24 Vdc	+24 Vdc
Pin 2 - White	Not connected	Not connected	24 Vdc = Power 0 Vdc = Eco
Pin 3 - Blue	0 Vdc	0 Vdc	0 Vdc
Pin 4 - Black	Not connected	Not connected	Not connected

Output M8A	Power	Eco	Dual
Pin 1 - Brown	+24 Vdc	+24 Vdc	+24 Vdc
Pin 2 - White	Not connected	Not connected	Same as Pin 2 input
Pin 3 - Blue	0 Vdc	0 Vdc	0 Vdc
Pin 4 - Black	Not connected	Not connected	Not connected

M8A Male



M8A Female



Fixings

S00G2



SCX · 5000K

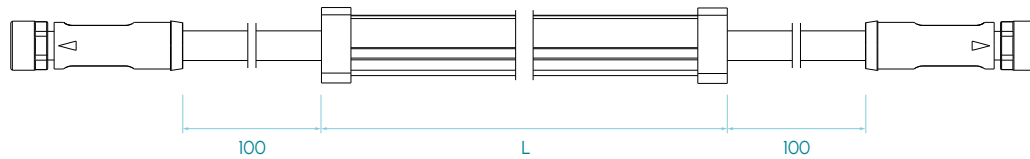
lumher

Measures

Axial version Cable - M8A Cable



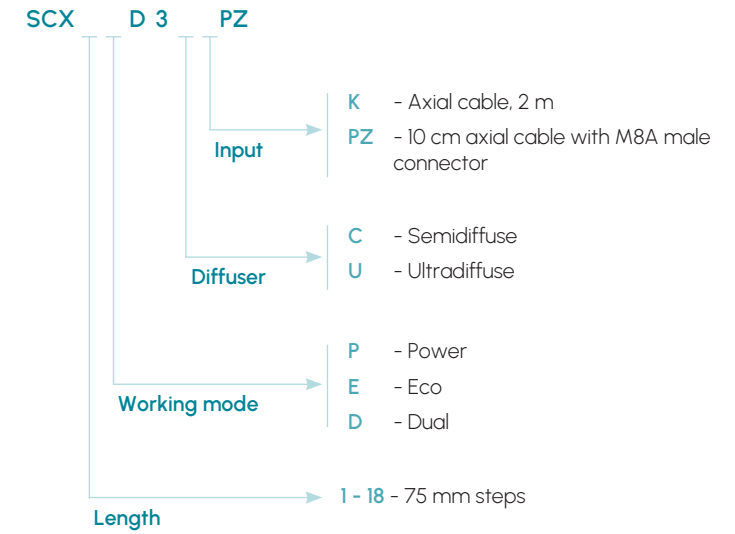
Axial version M8A Cable - M8A Cable



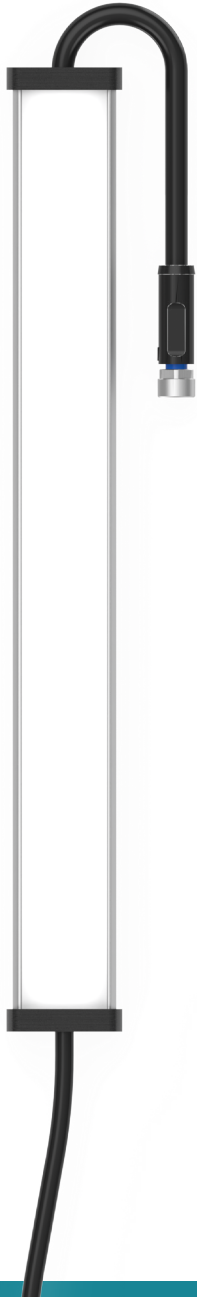
Measures in mm

SCX · 5000K

Selection guide

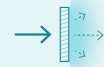


SCX Series · Daylight white 5000K



5000K

DAYLIGHT
WHITE



SEMIDIFFUSE
150°



ULTRADIFFUSE
150°

PHOTOBIOLOGICAL
RISK

RG1 - LOW

60.000h

LIFESPAN

Table of characteristics

	Length L1 ⁽²⁾ (mm)	Length L2 ⁽²⁾ (mm)	Weight (g)	Illuminance Ev (lx) @ 1m				Luminous flux ⁽³⁾ (lm)		Power consumed (W)	
				SEMIDIFFUSE		ULTRADIFFUSE		POWER	ECO	POWER	ECO
	POWER	ECO	POWER	ECO	POWER	ECO					
	SCX 01...	105	123	115	60	32	47	25	251	126	1,6
SCX02...	180	198	141	120	65	94	51	502	251	3,2	1,6
SCX 03...	255	273	167	180	97	141	76	754	377	4,8	2,4
SCX 04...	330	348	193	240	129	188	101	1.005	502	6,4	3,2
SCX 05...	405	423	219	299	161	236	127	1.256	628	8,0	4,0
SCX 06...	480	498	245	359	194	283	152	1.507	754	9,6	4,8
SCX 07...	555	573	271	419	226	330	178	1.758	879	11,2	5,6
SCX 08...	630	648	297	479	258	377	203	2.010	1.005	12,8	6,4
SCX 09...	705	723	323	539	290	424	228	2.261	1.130	14,4	7,2
SCX 10...	780	798	349	599	323	471	254	2.512	1.256	16,0	8,0
SCX 11...	855	873	375	659	355	518	279	2.763	1.382	17,6	8,8
SCX 12...	930	948	401	719	387	565	304	3.014	1.507	19,2	9,6
SCX 13...	1.005	1.023	427	779	420	612	330	3.266	1.633	20,8	10,4
SCX 14...	1.080	1.098	453	838	452	660	355	3.517	1.758	22,4	11,2
SCX 15...	1.155	1.173	479	898	484	707	380	3.768	1.884	24,0	12,0
SCX 16...	1.230	1.248	505	958	516	754	406	4.019	2.010	25,6	12,8
SCX 17...	1.305	1.323	531	1.018	549	801	431	4.270	2.135	27,2	13,6
SCX 18...	1.380	1.398	557	1.078	581	848	457	4.522	2.261	28,8	14,4

(2) Versions with radial input and/or radial output will have as length L2, the rest will be L1.

(3) The luminous flux (lm) is before diffuser.

lumher