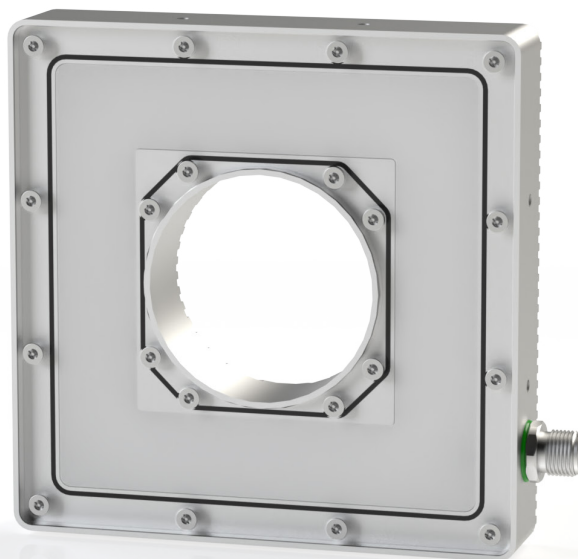


Ring · RD1 SERIES Infrared 850 nm

lumher



24 V
DC



NOT
CASCADABLE

IP65



M12A



MACHINE VISION

CONTINUOUS 1x
STROBE 4x



INTEGRATED
CONTROLLER

36
MONTHS



MADE IN SPAIN

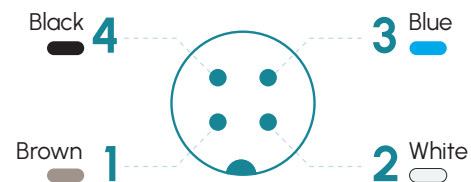
Technical specifications

Power supply voltage	24 Vdc \pm 5%	
Trigger input	24 Vdc PNP / NPN	
Max. on time	Continuous = unlimited	Strobe = 10 ms
Max. working cycle	Continuous = 1	Strobe = 1/6
Max. consumption Trigger input	1,5 mA	
Max. number of cascadable modules	This luminaire is not cascadable	
Wavelength	Infrared	850 nm
Beam angle	Semidiffuse	110°
	Ultradiffuse	110°
Electrical protections	Transient overvoltages	YES
	Polarity reversal	YES
	Current sablizer	YES
IP Rating	IP65	
Protection type	Class III	
Operating temperature	-10 °C to +40 °C	
Storage temperature	0°C to +60 °C	
Max. relative humidity	80% (without condensation)	
Body material	Anodized aluminum	
Diffuser material	PMMA plastic	
Connection types	M12A connector	
Standards	RoHs, CE	

Connection

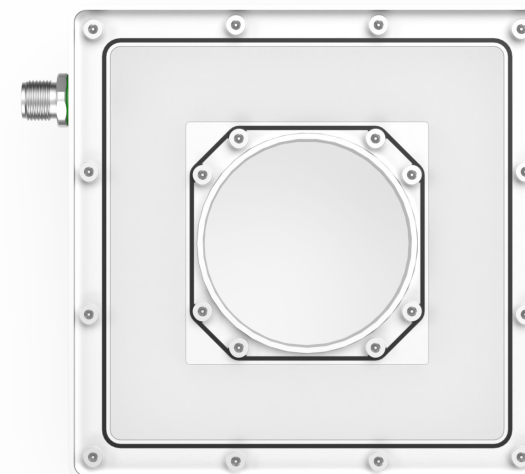
M12A input	Continuous	Master Continuous - Strobe
Pin 1 - Brown	+24 Vdc	+24 Vdc
Pin 2 - White	Not connected	Trigger NPN
Pin 3 - Blue	0 Vdc	0 Vdc
Pin 4 - Black	Not connected	Trigger PNP

M12A Male



Fixings

B00S1

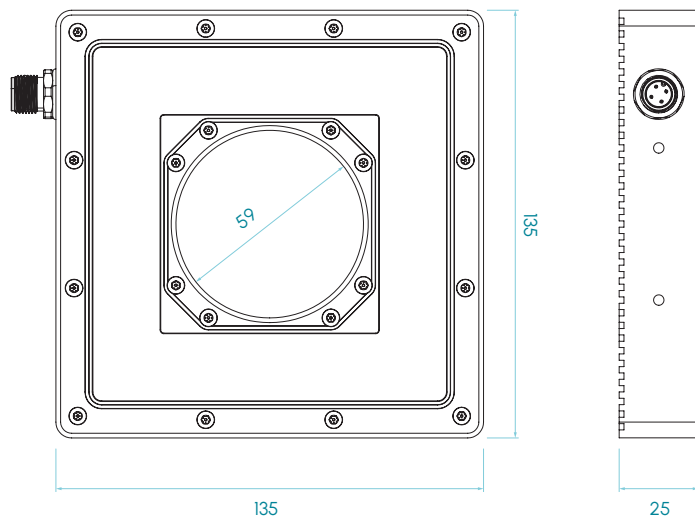


RD1 · 850 nm

lumher

Measures

RD1



Selection guide

RD 1 F 5 Y

Diffuser

- C - Semidiffuse
- U - Ultradiffuse

Working mode

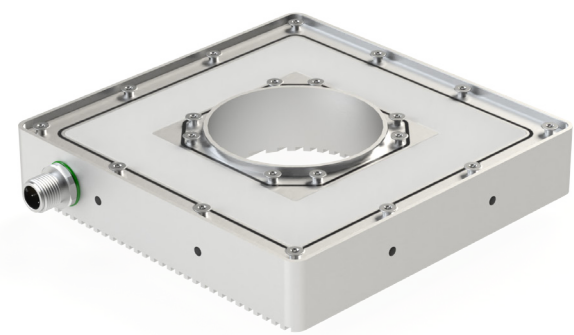
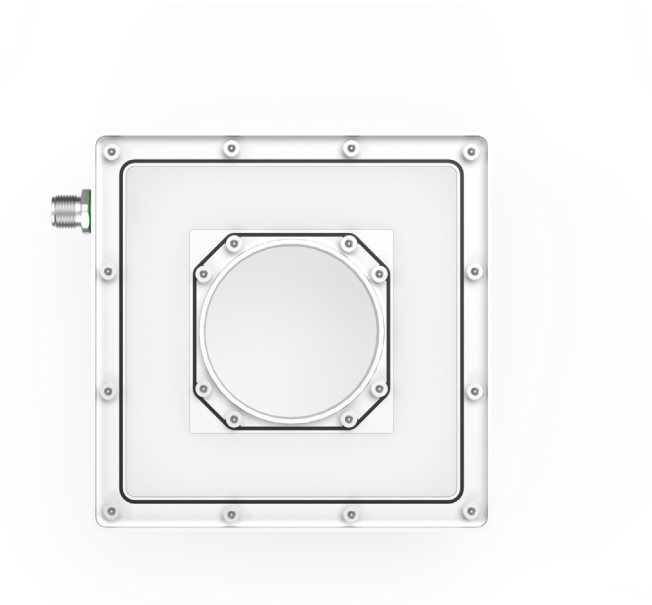
- P - Continuous
- Z - Master Cont. - Strobe

Measures in mm

RD1 · 850 nm

lumher

Model RD1 · Infrared 850 nm



850nm

INFRARED

SEMIDIFFUSE
110°

ULTRADIFFUSE
110°

PHOTOBIOLOGICAL
RISK

RG1 - LOW

60.000h

LIFESPAN

Table of characteristics

	Width	Length	Weight	Radiated power ⁽¹⁾		Power consumed	
	(mm)	(mm)	(g)	(W)		(W)	
				CONT.	STROBE	CONT.	STROBE
RD 1 ...	135	135	615	1,6	6,4	4,0	16,0

(1) The radiated power (W) is before the diffuser.