

Parallel · P2D Series White 5000K

lumher



24 V
DC



NOT
CASCADABLE

CABLE
M12A



MACHINE VISION



POLARIZED

CONTINUOUS 1x
STROBE 4x



INTEGRATED
CONTROLLER

IP40
IP65

36
MONTHS



MADE IN SPAIN

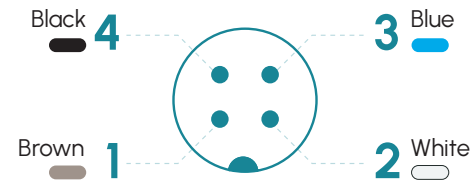
Technical specifications

Power supply voltage	24 Vdc ±5%	
Trigger input	24 Vdc PNP / NPN	
Max. on time	Continuous = unlimited	Strobe = 10 ms
Max. working cycle	Continuous = 1	Strobe = 1/6
Max. consumption Trigger input	1,5 mA	
Max. number of cascadable modules	This luminaire is not cascadable	
Wavelength	White	5000 K
Beam angle	Semidiffuse Ultradiffuse	60° 110°
Electrical protections	Transient overvoltages Polarity reversal Current sabilizer	YES YES YES
IP Rating	IP40 o IP65	
Protection type	Class III	
Operating temperature	-10 °C to +40 °C	
Storage temperature	0°C to +60 °C	
Max. relative humidity	80% (without condensation)	
Body material	Anodized aluminum	
Side cover material	Anodized aluminum	
Diffuser material	Polycarbonate	
Connection types	M12A, 2m cable, M12A connector with cable	
Standards	RoHs, CE	

Connection

M12A input - Cable	Continuous	Master Continuous - Strobe
Pin 1 - Brown	+24 Vdc	+24 Vdc
Pin 2 - White	Not connected	Trigger NPN
Pin 3 - Blue	0 Vdc	0 Vdc
Pin 4 - Black	Not connected	Trigger PNP

M12A Male



Fixings

C00F1, P00R2

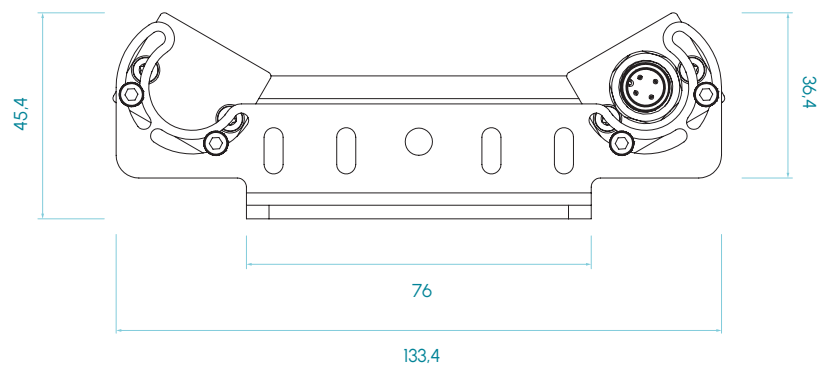
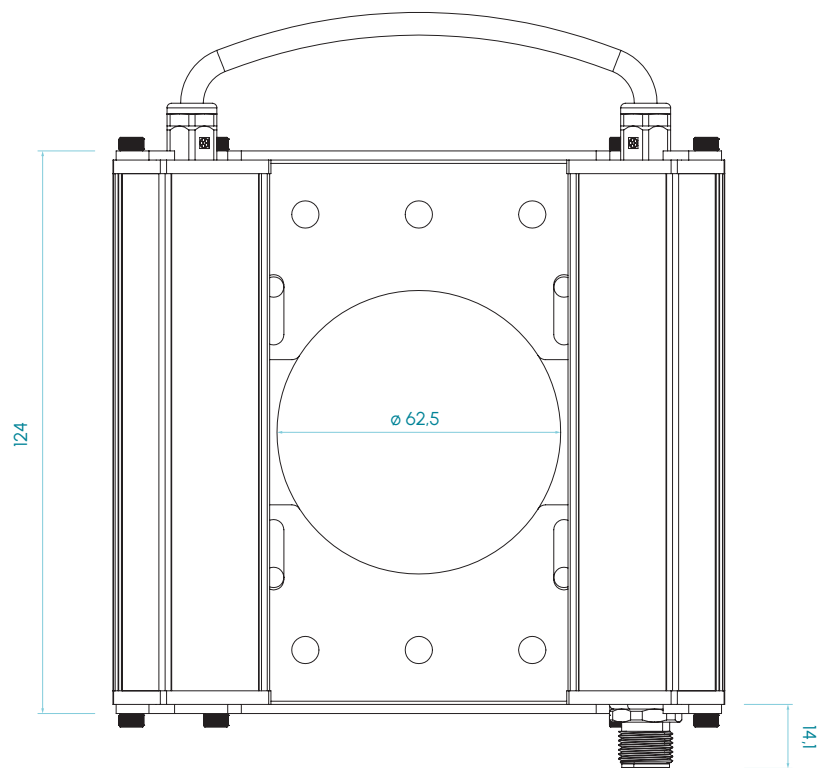


P2D · 5000K

lumher

Measures

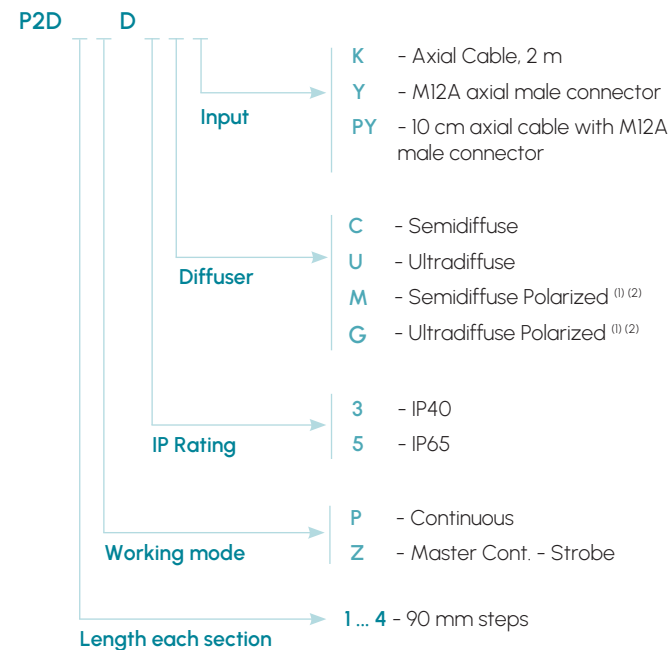
IP40 / IP65



Measures in mm

P2D · 5000K

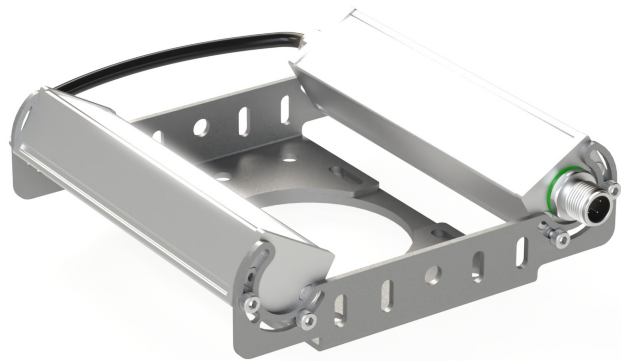
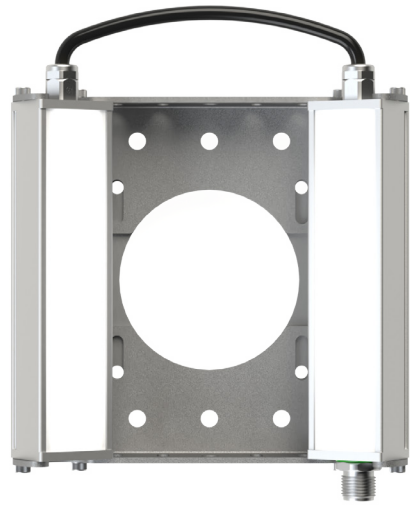
Selection guide



(1) Light polarization performs optimally with a clear cover; using semi-diffused or ultra-diffused diffusers may compromise polarization.

(2) The use of a polarizing filter in continuous operation and white lighting is not recommended due to fast degradation of the filter caused by temperature.

Model P2D · White 5000K



5000K

WHITE



SEMIDIFFUSE
60°



ULTRADIFFUSE
110°

PHOTOBIOLOGICAL
RISK

RG1 - LOW

60.000h

LIFESPAN

Table of characteristics

	Width (mm)	Length (mm)	Weight (g)	Luminous flux ⁽³⁾ (lm)		Power consumed (W)	
				CONT.	STROBE	CONT.	STROBE
				P2D 1...	135	125	430
P2D 2...	135	215	780	1.216	4.864	7,6	30,4
P2D 3...	135	305	1.130	1.824	7.296	11,4	45,6
P2D 4...	135	395	1.480	2.432	9.728	15,2	60,8

(3) The luminous flux (lm) is before diffuser.

lumher