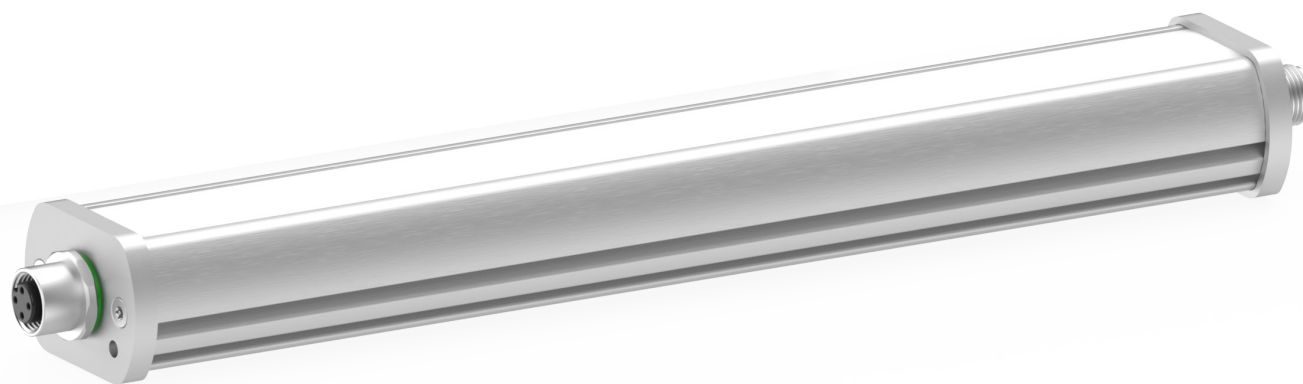


Functional · FRX Series White 5000K

lumher



24 V
DC

155
lm/W



CASCADABLE



INCREMENTAL



FUNCTIONAL

CABLE
M12A

POWER 1x
ECO 0.5x

IP40
IP65

PWM
DIMABLE

CLASS III

36
MONTHS

EU
MADE IN SPAIN

Technical specifications

Power supply voltage	24 Vdc ±5%	
Luminous efficiency	155 lm/W	
PWM regulation (Max 25 KHz)	min. 0%	max. 100%
Wavelength	Daylight white	5000K
Beam angle	Semidiffuse Ultradiffuse	60° 110°
Max. number of cascable modules ⁽¹⁾	Power: 37	Eco: 74
Electrical protections	Transient overvoltages Polarity reversal Current stabilizer	YES YES YES
Colour Rendering Index (CRI)	≥ 80	
IP Rating	IP40 or IP65	
Protection type	Class III	
Operating temperature	POWER version ECO version	-10°C to +40°C -10°C to +50°C
Storage temperature	0°C a +60°C	
Max. relative humidity	80% (without condensation)	
Body material	Anodized aluminum	
Side cover material	Anodized aluminum	
Diffuser material	Polycarbonate	
Connection types	M12A, 2m cable, M12A connector with cable	
Standards	RoHs, CE	

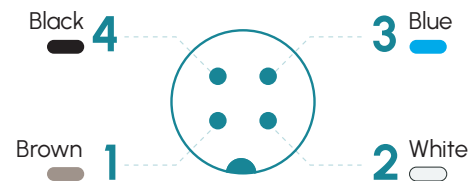
(1) The number representing the length of the luminaire is the number of modules it has.

Connection

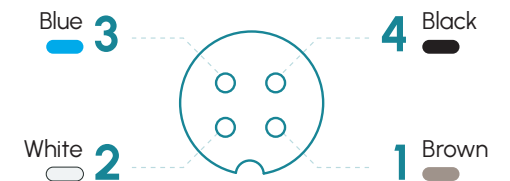
Input M12A - Cable	Power	Eco	Dual
Pin 1 - Brown	+24 Vdc	+24 Vdc	+24 Vdc
Pin 2 - White	Not connected	Not connected	24 Vdc = Power 0 Vdc = Eco
Pin 3 - Blue	0 Vdc	0 Vdc	0 Vdc
Pin 4 - Black	Not connected	Not connected	Not connected

Output M12A	Power	Eco	Dual
Pin 1 - Brown	+24 Vdc	+24 Vdc	+24 Vdc
Pin 2 - White	Not connected	Not connected	Same as Pin 2 input
Pin 3 - Blue	0 Vdc	0 Vdc	0 Vdc
Pin 4 - Black	Not connected	Not connected	Not connected

M12A Male



M12A Female



Fixings

F00G2, F00G4, F00R1, M6D16

FRX · 5000K

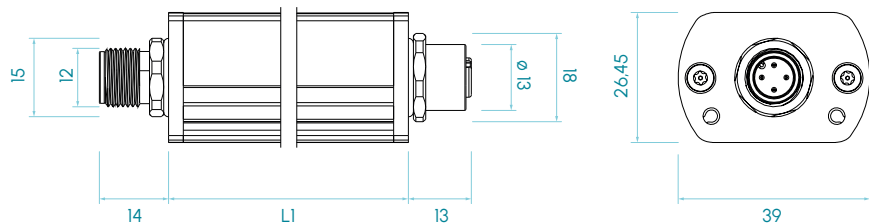


lumher

Measures

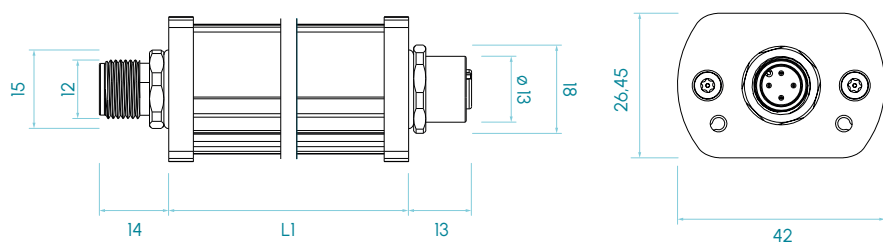
IP40

M12A axial version



IP65

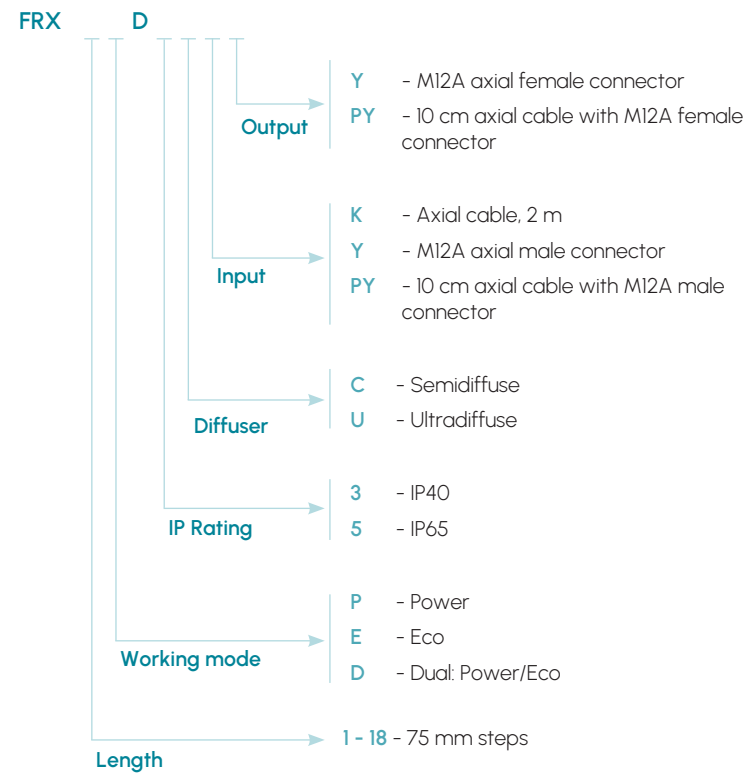
M12A axial version



Measures in mm

FRX · 5000K

Selection guide



lumher

FRX Series · Daylight white 5000K



FRX

5000K
DAYLIGHT
WHITE

SEMIDIFFUSE
60°

ULTRADIFFUSE
110°

PHOTOBIOLOGICAL
RISK
RG1 - LOW

60.000h
LIFESPAN

Table of characteristics

	Length L1 (mm)	Weight (g)	Iluminancia Ev (lx) @ 1 m				Luminous flux ⁽²⁾ (lm)		Power consumed (W)	
			SEMIDIFFUSE		ULTRADIFFUSE		POWER	ECO	POWER	ECO
			POWER	ECO	POWER	ECO				
FRX 01...	105	224	88	50	53	30	372	186	2,4	1,2
FRX 02...	180	344	176	100	105	60	744	372	4,8	2,4
FRX 03...	255	464	264	150	158	89	1.116	558	7,2	3,6
FRX 04...	330	584	352	200	210	119	1.488	744	9,6	4,8
FRX 05...	405	704	440	250	263	149	1.860	930	12,0	6,0
FRX 06...	480	824	528	300	315	179	2.232	1.116	14,4	7,2
FRX 07...	555	944	616	350	368	209	2.604	1.302	16,8	8,4
FRX 08...	630	1.064	705	400	421	238	2.976	1.488	19,2	9,6
FRX 09...	705	1.184	793	450	473	268	3.348	1.674	21,6	10,8
FRX 10...	780	1.304	881	500	526	298	3.720	1.860	24,0	12,0
FRX 11...	855	1.424	969	550	578	328	4.092	2.046	26,4	13,2
FRX 12...	930	1.544	1.057	600	631	358	4.464	2.232	28,8	14,4
FRX 13...	1.005	1.664	1.145	650	684	387	4.836	2.418	31,2	15,6
FRX 14...	1.080	1.784	1.233	699	736	417	5.208	2.604	33,6	16,8
FRX 15...	1.155	1.904	1.321	749	789	447	5.580	2.790	36,0	18,0
FRX 16...	1.230	2.024	1.409	799	841	477	5.952	2.976	38,4	19,2
FRX 17...	1.305	2.144	1.497	849	894	507	6.324	3.162	40,8	20,4
FRX 18...	1.380	2.264	1.585	899	946	536	6.696	3.348	43,2	21,6

(2) The luminous flux (lm) is before the diffuser