

# Backlight · BD2 SERIES Infrared 850 nm

lumher



24 V  
DC

NOT  
CASCADABLE

IP65

M12A

MACHINE VISION

CONTINUOUS 1x  
STROBE 4x

INTEGRATED  
CONTROLLER

36  
MONTHS

EU  
MADE IN SPAIN

# Technical specifications

Power supply voltage	24 Vdc $\pm$ 5%	
Trigger input	24 Vdc PNP / NPN	
Max. on time	Continuous = unlimited	Strobe = 10 ms
Max. working cycle	Continuous = 1	Strobe = 1/6
Max. consumption Trigger input	1,5 mA	
Max. number of cascadable modules	This luminaire is not cascadable	
Wavelength	Infrared	850 nm
Beam angle	Semidiffuse	110°
	Ultradiffuse	110°
Electrical protections	Transient overvoltages	YES
	Polarity reversal	YES
	Current sabilizer	YES
IP Rating	IP65	
Protection type	Class III	
Operating temperature	-10 °C to +40 °C	
Storage temperature	0°C to +60 °C	
Max. relative humidity	80% (without condensation)	
Body material	Anodized aluminum	
Diffuser material	PMMA plastic	
Connection types	M12A connector	
Standards	RoHs, CE	

# Connection

M12A input	Continuous	Master Continuous - Strobe
Pin 1 - Brown	+24 Vdc	+24 Vdc
Pin 2 - White	Not connected	Trigger NPN
Pin 3 - Blue	0 Vdc	0 Vdc
Pin 4 - Black	Not connected	Trigger PNP

## M12A Male



## Fixings

B00S1

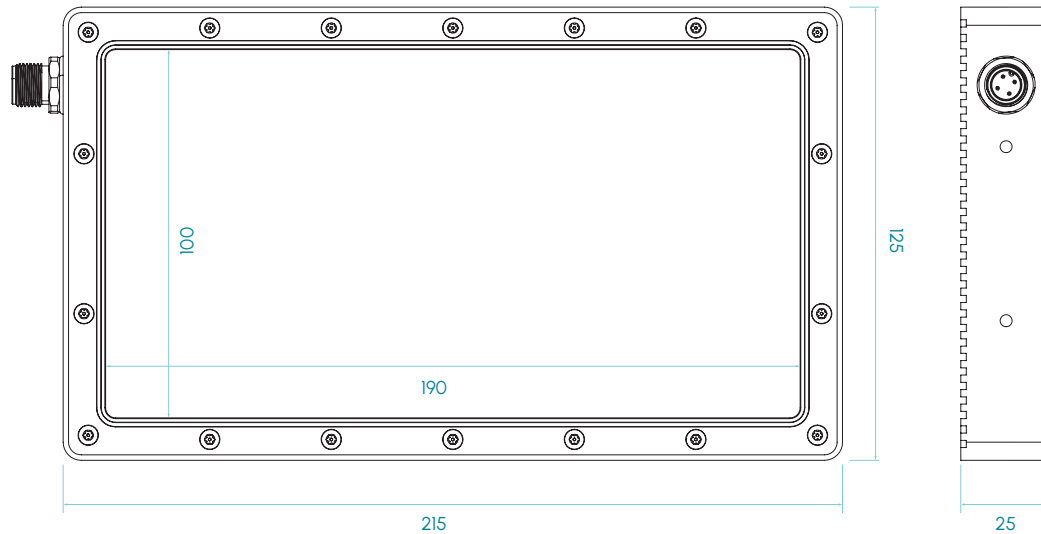


BD2 · 850 nm

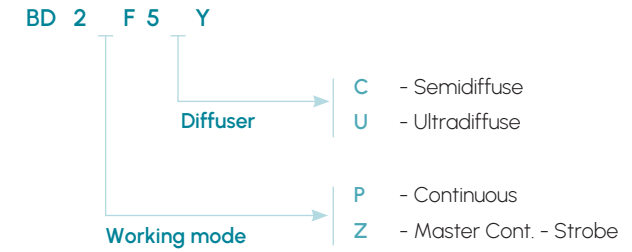
lumher

## Measures

BD2



## Selection guide

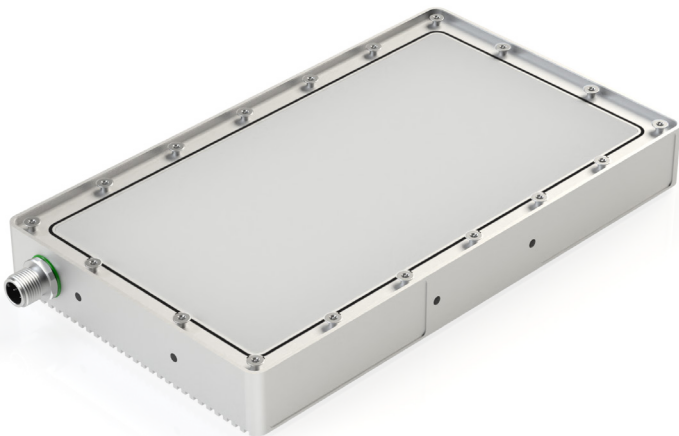


Measures in mm

BD2 · 850 nm

lumher

Model BD2 · Infrared 850 nm



850nm

INFRARED

SEMIDIFFUSE  
110°

ULTRADIFFUSE  
110°

PHOTOBIOLOGICAL  
RISK

RG1 - LOW

60.000h

LIFESPAN

Table of characteristics

BD 2 ...	Width	Length	Weight	Radiated power <sup>(1)</sup>		Power consumed	
	(mm)	(mm)	(g)	(W)		(W)	
				CONT.	STROBE	CONT.	STROBE
BD 2 ...	215	125	796	5,6	22,3	14,0	56,0

(1) Radiated power (W) is before the diffuser.